



## INDIA BY LAND, SOUTHEAST ASIA BY SEA WITH CELEBRITY CRUISES

Classic Cruising Tour | 26 Days | Physical Level 1

Delhi – Agra – Ranthambore – Jaipur – Delhi – Singapore – Koh Samui – Bangkok – Ho Chi Minh –  
Nha Trang – Hue – Hanoi – Hong Kong

This cruising tour includes all the classic sights and key cultural activities you would expect to see whilst visiting India, Thailand, Vietnam, Singapore and Hong Kong. Featuring bustling cities, beautiful beaches, historical sights and wildlife centric regions, this tour ensures you get the most out of your trip to these fascinating regions.

- Be awe inspired by the magnificent Taj Mahal
- Become immersed in the fast paced city life in Bangkok
- Embrace the hustle and bustle in Delhi
- Admire the impressive beaches in Thailand
- Search for the native tigers in Ranthambore National Park

TOUR MAP



## TOUR INCLUSIONS:

---

- Return international economy flights, taxes and current fuel surcharges (unless a land only option is selected)
- 12 nights on Celebrity cruise on Celebrity Solstice
- All accommodation
- Meals as stated (if dining on board throughout) – 24 breakfasts (B), 23 lunches (L), 24 dinners (D)
- All sightseeing and entrance fees, transportation and transfers pre and post cruise
- English speaking National Escort (if your group is 10 or more passengers) or Local Guides pre and post cruise
- Visa fees for Australian passport holders
- Specialist advice from our experienced travel consultants
- Comprehensive travel guides

*Pre and post cruise, the only elements or aspects you may have to pay for are personal expenditures e.g., drinks, optional excursions or shows, insurance of any kind, tipping, early check in or late checkout and other items not specified on the itinerary.*

*During the cruise, your meals on board will be included in the main dining areas, however, should you wish to dine in any of the speciality restaurants not included in your cruising package, you will be required to pay for these locally. In addition, if you opt to dine off the ship, these meals will also be paid for locally, and please note you will not be refunded for meals missed on board. Excursions are also available to book with your cruise reservation at your own expense.*

## CLASSIC CRUISING TOURS:

---

These tours are designed for those who wish to see the iconic sites and magnificent treasures of Thailand, Vietnam and India on an excellent value group tour whilst travelling with like-minded people combined with a cruise. The tours are on a fully inclusive basis pre and post cruise, so you will travel with the assurance that all your arrangements before and after your cruise are taken care of. You will be accompanied by our dedicated and professional National Escorts and local guides, whose unparalleled knowledge will turn your holiday into an unforgettable experience.

### JOINING YOUR TOUR:

---

The tour is 26 days in duration including international flights. Join the tour on Day 1 in Delhi and end the tour on Day 25 in Hong Kong.

For travellers booked on a 'Land and Cruise Only' package, which omits the inclusion of international flights, the price includes your arrival/departure airport transfers if arriving/departing on the start and conclusion date of your tour. Please advise your international flight information to our reservations team.

### ITINERARY CHANGES:

---

We intend to adhere to the day-to-day itinerary as printed; however, the order of events or sightseeing may change as we look to improve our tours, or as dictated by local conditions. In these circumstances, we will endeavour to make the best possible arrangements whilst maintaining the integrity of your trip. Similarly, while cruise liners always endeavour to adhere to the published itineraries, they may be changed at the discretion of the captain due to weather advisories, port traffic, and any other unforeseeable circumstances.

### PHYSICAL LEVEL 1:

---

All our tours feature a physical rating to help you select the right holiday for you. To travel on any of our tours requires unaided mobility and the ability to stroll around the sights.

'India by Land, Southeast Asia by sea with Celebrity Cruises' is rated as a **physical level 1** tour. A reasonable level of fitness is required, and you should expect to be on your feet for much of the day. You will be getting on and off coaches, trains or boats and walking around the sights, often including steps, plus occasional longer walks.

- There will be sightseeing on foot for both short and extended periods of time, often on uneven surfaces
- You will be required to get on and off small boats without assistance
- You will be required to board the cruise ship without assistance and get on and off at ports if you wish to disembark the ship

Of course, our National Escort and local guides will always endeavour to provide the highest level of service and assistance; however, they cannot be expected to cater for customers who are unfit to complete the itinerary.

**DETAILED ITINERARY****Day 1: Arrive in Delhi****Meals: D**

Fly to Delhi. Upon arrival, you will be met at the airport by your English speaking representative. Together with all other group members who may be arriving at a similar time, travel to your hotel and check in.

*Early check-in is not included. Additional nights before and after your tour can be arranged. Please contact our Reservations team to book.*

**Destination Information**

**Delhi** – As the capital of India, Delhi is the third largest city with a population of approximately 18 million people. Its strategic location along the north-south, east-west route has given it a focal position in Indian history and many great empires have been ruled from here. The monuments and ruins of these are scattered throughout the city, often side by side with modern structures and high-rise towers.

**Day 2: Delhi****Meals: B, L, D**

Begin today's tour starting in Old Delhi. Stroll through Chandni Chowk, savouring the ambience of the oriental and bustling bazaar.

Afterwards, continue to India's largest mosque, Jama Masjid, for a brief photo stop. After making a stop for lunch, observe the President's Palace and India Gate by coach. Continue onto Humayun's Tomb, followed by the 12th century Qutab Minar and bustling Connaught Markets.



Here, you will find linen clothing, saris, handicrafts, jewellery, books and homewares to name a few. There is also an opportunity to sample some of the local Indian street food such as Samosas, Onion Pakodas, Chai Tea and more.

Finally, return to your hotel and spend the remainder of the evening at leisure.

Sightseeing this morning and afternoon involves 3 to 4 hours on foot.

### Destination Information

**Jama Masjid** – Jama Masjid is the largest mosque in India, with a courtyard capable of holding 25,000 devotees. Built between 1644 and 1658, the mosque was Shah Jahan's final architectural achievement.

**India Gate** – Located at the end of the Rajpath, India Gate is a moving memorial to the 90,000 Indian servicemen who died in World War 1.

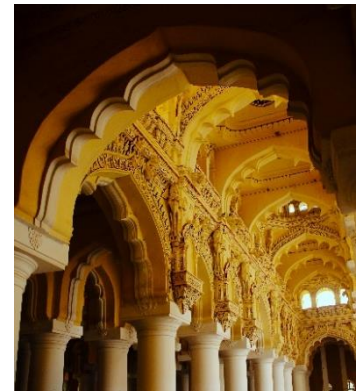
**Humayun's Tomb** – A landmark of Mughal architecture, the tomb was built in 1570 for the Mughal Emperor Humayun. Commissioned by his wife, it was the first garden tomb in India.

**Day 3: Delhi – Agra**

**Meals: B, L, D**

After breakfast, you will commence the drive to Agra, home to the world-famous Taj Mahal. The journey time is approximately 4 hours.

Upon arrival, check in and enjoy lunch. This afternoon, you will pay a visit to the imposing Agra Fort. Afterwards, return to your hotel and spend the remainder of the evening at leisure.



### Destination Information

**Agra** – Most famous as the home of the Taj Mahal, Agra is set on a bend in the sacred Yamuna River. Both the city fort and Taj Mahal overlook the river, alongside several significant tombs and mausoleums from the Mughal period. The Taj Mahal is undoubtedly the highlight of Agra, with a magnificent structure that easily lives up to its exalted reputation.

**Agra Fort** – Situated on the west bank of the Yamuna River and built by Emperor Akbar between 1565 and 1573. Its imposing red sandstone ramparts form a crescent along the riverfront and encompass an enormous complex of courtly buildings, ranging in style from the early eclecticism of Akbar to the sublime elegance of Shah Jahan. The barracks to the north are British additions from the 19th century. A deep moat, once filled with water from the Yamuna River surrounds the fort.

**Day 4: Agra – Ranthambore****Meals: B, L, D**

Before the sun rises, you will be taken to the Taj Mahal. Be awe struck by the unforgettable experience and beauty of the sunrise over this architectural marvel.

No polluting vehicles are allowed within a 500m radius of the Taj Mahal complex, so at a designated point you will need to board a small electric cart to drive to the entrance gate.

After your memorable visit, return to your hotel for breakfast.

This afternoon, you will proceed to Ranthambore, a journey of approximately 5 hours. Upon arrival, check in to your hotel and spend the rest of the day at leisure.

**Destination Information**

**Taj Mahal** – The Taj Mahal is one of the seven wonders of the world. It stands proud as an ivory-white marble mausoleum on the right bank of the river Yamuna in Agra, Uttar Pradesh, India. It was commissioned in 1631 by the fifth Mughal emperor, Shah Jahan to house the tomb of his beloved wife, Mumtaz Mahal; it also houses the tomb of Shah Jahan himself.

**Ranthambore National Park** – Ranthambore National Park is a vast wildlife reserve near the town of Sawai Madhopur in Rajasthan, northern India. It is a former royal hunting ground and home to tigers, leopards and marsh crocodiles. Its landmarks include the imposing 10th-century Ranthambore Fort, on a hilltop, and the Ganesh Mandir temple. Also in the park, Padam Talao Lake is known for its abundance of water lilies.

**Day 5: Ranthambore****Meals: B, L, D**

Your safari experience begins early as you are taken on your first game drive. Enjoy exploring the National Park in a shared vehicle.

Afterwards, return to the hotel for breakfast and enjoy some time to relax before heading back out into the National Park for your second safari in the mid-afternoon.

There are around 70 majestic Bengal tigers living amongst Ranthambore's landscapes, as well as leopards, sloths, wild boar, hyena and over 300 species of birds.



**Day 6: Ranthambore – Jaipur****Meals: B, L, D**

After breakfast and check out, you will be transferred to Jaipur. The journey time is approximately 4 hours. Upon arrival, check in to your hotel and enjoy the rest of your day at leisure.

**Destination Information**

**Jaipur** – Jaipur is the capital of India's Rajasthan state. It evokes the royal family that once ruled the region and that, in 1727, founded what is now called the Old City, or "Pink City" for its trademark building colour. At the center of its stately street grid (notable in India) stands the opulent, colonnaded City Palace complex. With gardens, courtyards and museums, part of it is still a royal residence.

**Day 7: Jaipur****Meals: B, L, D**

Begin today's tour with a brief photo stop at Hawa Mahal (Palace of the Winds) before continuing to Amber Fort. Inside the fort you will see the Jag Mandir, or Hall of Victory, which houses the famed Sheesh Mahal.

Afterwards, visit Maharaja's City Palace to explore the former Royal residence. Outside the gate to Maharaja's City Palace is Jantar Mantar, the largest stone and marble crafted observatory in the world. Before returning to the hotel, stop for some shopping inside the walled city, where villagers from around Jaipur come to sell and trade their produce.



Sightseeing this morning and afternoon involves 2 to 3 hours on foot and there are several steps within the fort.



### Destination Information

**Hawa Mahal (Palace of the Winds)** – A five-story palace erected in 1799 by the Sawai Pratap Singh so that the veiled ladies of his harem could observe, unnoticed, the lively street scenes below.

**Amber Fort** – Built from yellow and pink sandstone and white marble, Amber Fort was constructed in the 16th century by Raja Man Singh. Inside the fort visit the Hall of Victory, which houses the framed Sheesh Mahal.

**Maharaja's City Palace** – A former royal residence located in the heart of the Old City. Part of the building has been converted into a museum, while the royal family of Jaipur still uses the remaining sections of the palace as a private residence.

**Jantar Mantar Observatory** – The largest stone and marble crafted observatory in the world is located just outside the City Palace. The observatory has 17 large instruments, many of them still in working condition.

---

#### Day 8: Jaipur – Delhi

Meals: B, L, D

After breakfast, you will commence the drive back to Delhi. The journey time is approximately 5 hours. Upon arrival, check in to your hotel and enjoy the rest of your day at leisure.



---

#### Day 9: Depart Delhi - Singapore

Meals: B, L, D

After breakfast and check out, you will be transferred to Delhi airport where you will board your 6-hour flight to Singapore. On arrival into Singapore airport, be met by an English-speaking assistant and transfer from the airport to the hotel for check-in.



### Destination Information

**Singapore**- This tiny republic sits just above the equator and the tip of the Malay peninsula. The trading port was put on the global map by Stamford Raffles, who negotiated the 1819 Treaty of Singapore, when the British East India Company opened up a trading port. Singapore passed through the hands of Britain, Japan and Malaysia before gaining full independence in 1965. Today, it has a highly developed economy and is ranked as a world leader in healthcare and education.

**Day 10: Singapore****Meals: B, L, D**

After breakfast this morning, begin your full day city tour with a visit to Singapore's historic Chinatown, a bustling mix of old and new, filled with traditional shops and markets as well as a selection of stores and cafes.

Enjoy a stop at the Buddha Tooth Relic Temple and Museum, located in Chinatown before visiting the Kampong Glam, a historically rich and vibrant neighbourhood dating back to the 19<sup>th</sup> century. Here, you will also get to learn about the art of teh tarik or "pulling tea".



Continue your tour with a visit to the Civic District, passing by the historic Parliament House and the National Gallery Singapore before arriving at the Merlion Park. Enjoy views of the Marina Bay before taking a stroll through the hidden underground walkway, once a vital tunnel used for transporting mail, now serving as a corridor for The Fullerton Hotel where you will enjoy an afternoon 'high' tea for lunch.

This evening, embark on a sunset river cruise up Singapore River before enjoying dinner at a local seafood restaurant. To conclude your evening, you will visit the colourful Gardens by the Bay. Explore the unique architecture before enjoying the impressive Gardens by the Bay Light Show.

**Destination Information**

**Gardens by the Bay** – This large public garden is famous for its Supertree Grove – vertical gardens built on tree-like sculptures up to 50 metres tall. Atop them sits the Sky Garden, accessible by elevated walkway.

**Chinatown** – Chinatown's maze of narrow roads includes Chinatown Food Street, with its restaurants serving traditional fare like Hainanese chicken rice, noodles and satay. Souvenir shops and indie boutiques dot the area, offering clothes, crafts and antiques, while Club Street is full of trendy wine bars.

**Civic District** – This area has a rich history dating back to the colonial era, serving as the administrative and political heart of the city-state. It was here the Singapore declared its independence in 1965.

**Day 11: Embark Celebrity Cruise in Singapore****Meals: B, L, D**

After breakfast and check out, you will be transferred to Singapore cruise port. Today, you will board your Celebrity Solstice to begin your voyage tonight. Spend the rest of the day acclimatising to life on board.

*Please note, your National Escort or Local Guide will travel with you to the port, however they will not board the cruise with you. You will be met again by your new National Escort or Local Guide once you disembark in Hong Kong.*

**Day 12: Cruising****Meals: B, L, D**

Whilst onboard, enjoy the entertainment and amenities the Celebrity Solstice cruise ship has to offer. Meals can be enjoyed from 10 different restaurants & cafes, whilst drinks can be consumed at several lounges & bars (including a specialty wine cellar bar). Entertainment on offer includes nightly theatre shows, a nightclub, and areas onboard with live music. Relaxation can be enjoyed at the spa (with treatments available) or whilst shopping in one of the many boutiques available onboard.

**Day 13: Cruising – Koh Samui, Thailand****Meals: B, L, D**

This morning, dock in Koh Samui. Enjoy a range of excursions here. Return to the cruise ship to depart Koh Samui this evening.

*Please note: Any excursions on this day will be at your own expense. You can book your shore excursions in advance or during your time onboard the Celebrity Solstice cruise ship.*

*Please note, if you dine off the cruise ship, these meals will be at your own expense.*

**Destination Information**

**Koh Samui** – This small tropical paradise, lined with coconut palms and white sand beaches and encircled by turquoise water is a perfect place to escape and explore. Gaze up at the Big Buddha, cool off in the natural pool at the base of Na Muang Waterfall and view the astonishing natural rock formations of Hin Ta and Hin Yai.

**Day 14: Cruising – Bangkok / Laemchabang****Meals: B, L, D**

This morning, dock in Bangkok. Enjoy a range of excursions here. Return to the cruise ship and spend the remainder of the evening at leisure on the cruise.

*Please note: Any excursions on this day will be at your own expense. You can book your shore excursions in advance or during your time onboard the Celebrity Solstice cruise ship.*

*Please note, if you dine off the cruise ship, these meals will be at your own expense.*

**Destination Information**

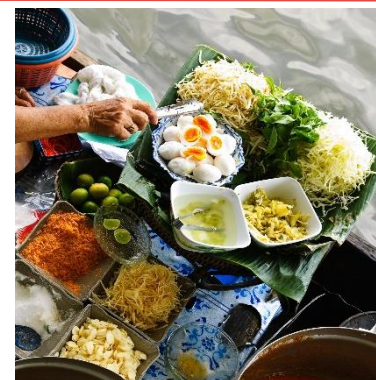
**Bangkok** – Bangkok has been Thailand's dominant city since the 18th century. It was established as the capital after the former capital, Ayutthaya, was razed to the ground by the Burmese army. It was the centre point of the modernisation of Siam in the late 19th century, leading the introduction of rail transport, the printing press, healthcare and utilities infrastructure. With a population of over 10 million, the fast pace of the city can be intense; however, beneath the hustle and bustle, there are many hidden gems waiting to be discovered.

**Day 15: Cruising - Bangkok / Laemchabang****Meals: B, L, D**

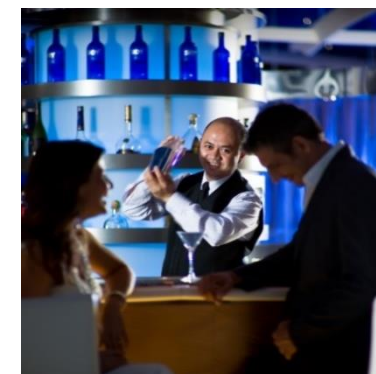
Spend your second day in Bangkok. Enjoy a range of excursions here. Return to the cruise ship to depart Bangkok this evening.

*Please note: Any excursions on this day will be at your own expense. You can book your shore excursions in advance or during your time onboard the Celebrity Solstice cruise ship.*

*Please note, if you dine off the cruise ship, these meals will be at your own expense.*

**Day 16: Cruising****Meals: B, L, D**

Spend today at sea enjoying what your cruise ship Celebrity Solstice has to offer.



**Day 17: Cruising – Ho Chi Minh****Meals: B, L, D**

This morning, dock in Ho Chi Minh. Enjoy a range of excursions here. Return to the cruise ship to depart Ho Chi Minh this evening. Spend the remainder of the evening at leisure.

*Please note: Any excursions on this day will be at your own expense. You can book your shore excursions in advance or during your time onboard the Celebrity Solstice cruise ship.*

*Please note, if you dine off the cruise ship, these meals will be at your own expense.*

**Destination Information**

**Ho Chi Minh** – Ho Chi Minh City, commonly known as Saigon, is the most populous city in Vietnam, with a population of around 10 million in 2023. The city's geography is defined by rivers and canals, of which the eponymously-named Saigon River is the largest.

**Day 18: Cruising – Nha Trang****Meals: B, L, D**

This morning, dock in Nha Trang. Enjoy a range of excursions here. Return to the cruise ship to depart Nha Trang this evening.

*Please note: Any excursions on this day will be at your own expense. You can book your shore excursions in advance or during your time onboard the Celebrity Solstice cruise ship.*

*Please note, if you dine off the cruise ship, these meals will be at your own expense.*

**Destination Information**

**Nha Trang** – Nha Trang is a coastal resort city in southern Vietnam known for its beaches, diving sites and offshore islands. Its main beach is a long, curving stretch along Tran Phu Street backed by a promenade, hotels and seafood restaurants. Aerial cable cars cross over to Hòn Tre Island, and the nature reserves of Hòn Mun and Hòn Tằm islands, reachable by boat, have coral reefs.

**Day 19: Cruising – Hue / Danang****Meals: B, L, D**

This morning, dock in Hue / Danang. Enjoy a range of excursions here. Return to the cruise ship to depart Hue / Danang this evening.

*Please note: Any excursions on this day will be at your own expense. You can book your shore excursions in advance or during your time onboard the Celebrity Solstice cruise ship.*

*Please note, if you dine off the cruise ship, these meals will be at your own expense.*

**Destination Information**

**Hue** – Huế is a city in central Vietnam that was the seat of Nguyen Dynasty emperors and the national capital from 1802 to 1945. A major attraction is its vast, 19th-century Đại Nội Citadel, surrounded by a moat and thick stone walls. It encompasses the Imperial City, with palaces and shrines; the Forbidden Purple City (Tử cấm thành), once the emperor's home; and a replica of the Royal Theater.

**Danang** – Da Nang is a coastal city in central Vietnam known for its sandy beaches and history as a French colonial port. It's a popular base for visiting the inland Bà Nà hills to the west of the city. Here the hillside Hải Vân Pass has views of Da Nang Bay and the Marble Mountains. These 5 limestone outcrops are topped with pagodas and hide caves containing Buddhist shrines.

**Day 20: Cruising – Hanoi****Meals: B, L, D**

This afternoon dock in Hanoi (Halong Bay). Enjoy a range of excursions here. Return to the cruise ship and enjoy this evening at leisure.

*Please note: Any excursions on this day will be at your own expense. You can book your shore excursions in advance or during your time onboard the Celebrity Solstice cruise ship.*

*Please note, if you dine off the cruise ship, these meals will be at your own expense.*

**Destination Information**

**Hanoi** – Hanoi, the capital of Vietnam, is known for its centuries-old architecture and a rich culture with Southeast Asian, Chinese and French influences. At its heart is the chaotic Old Quarter, where the narrow streets are roughly arranged by trade. There are many little temples, including Bach Ma, honoring a legendary horse, plus Đồng Xuân Market, selling household goods and street food.

**Day 21: Cruising - Hanoi****Meals: B, L, D**

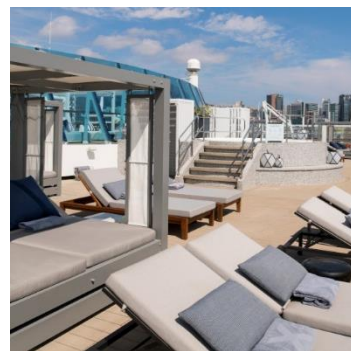
Enjoy spending a second day here at your leisure. The ship will depart this evening.

*Please note: Any excursions on this day will be at your own expense. You can book your shore excursions in advance or during your time onboard the Celebrity Solstice cruise ship.*

*Please note, if you dine off the cruise ship, these meals will be at your own expense.*

**Day 22: Cruising****Meals: B, L, D**

Spend today at sea enjoying what your cruise ship Celebrity Solstice has to offer.

**Day 23: Disembark Celebrity Cruise in Hong Kong****Meals: B, L, D**

Cruise into the port of Hong Kong, where on arrival you will be met by your English-speaking guide and new National Escort or Local Guide. Transfer to your hotel for check in and enjoy the rest of your day at leisure.

**Destination Information**

**Hong Kong** – Nestled in the Pearl River Estuary, Hong Kong is the personification of culture blend. Influenced by Chinese and British traditions, ways of life and habits, Hong Kong has emerged from being a small fishing community to one of the leading financial districts and richest cities in the world. With its deep-water harbour, stunning mountain vistas and urban glamour, Hong Kong is a buzzing blend of excitement and mystery.

**Day 24: Hong Kong****Meals: B, L, D**

Today your day begins visiting Victoria Peak by way of the famous Peak Tram. Enjoy spending some time walking around here before returning to Central. From here, take the Central Escalator to Tai Kwun, Hong Kong's latest art hub.

Next, visit Hollywood Road - named the second coolest street in the world - before stopping at Man Mo Temple and Blue House Cluster. Afterwards, watch a dim sum making demonstration and then enjoy eating them for lunch.



You will finish off your day in Hong Kong with a visit to the West Kowloon Cultural District with some free time to explore the area.

This evening, after dinner at a local restaurant, visit The Avenue of Stars to enjoy Victoria Harbour at nightfall.

**Destination Information**

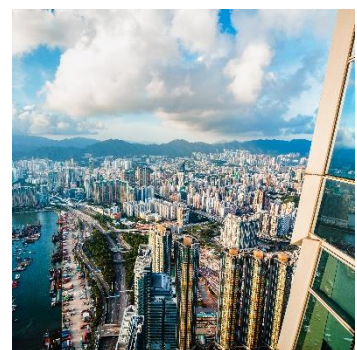
**Victoria Peak** – Victoria Peak is a hill on the western half of Hong Kong Island. It is also known as Mount Austin, and locally as The Peak only generally. With an elevation of 552 metres, it is the tallest hill on Hong Kong Island, and the 29th tallest in the territory of Hong Kong.

**Avenue of Stars** - The Avenue of Stars, modelled on the Hollywood Walk of Fame, is an avenue located along the Victoria Harbour waterfront in Tsim Sha Tsui, Hong Kong. It honours celebrities of the Hong Kong film industry.

**Days 25-26: Depart Hong Kong****Meals: B**

After breakfast and check out, you will be transferred to the airport for your overnight departure flight home. You will be transferred according to your flight time to ensure your arrival is 3hrs prior to your flight.

*Please note: Only breakfast is included today. Late check-out is not included. If you wish to book a late check-out for your final day in Hong Kong, please contact our reservations department who can confirm additional pricing and make this arrangement for you, subject to availability at the hotel.*





## TRAVEL INFORMATION

### VISAS:

---

Australian citizens do not require a visa to travel to Singapore, Hong Kong and Thailand.

Entry visas are required for Australian passport holders to visit Vietnam and India. The Wendy Wu Tours Visa Department can assist you with the process of obtaining a visa. Please be advised that your passport must have at least six months validity left on it when you arrive back into Australia. For the latest information on visa procedures, processing times and requirements, please kindly refer to our website <https://www.wendywutours.com.au/help-and-advice/passports-and-visas/>

Please note the visa procedures and requirements may change at any time. These changes are often made by the relevant embassy or consulate, Wendy Wu Tours acts as a third party and has no influence on the process of a visa. All information with regards to visas will be updated regularly on our website as we find visas process' are changing on regular basis.

### INSURANCE:

---

It is a condition of booking Cruise & Tour that you take out suitable travel insurance. You must provide us with the name of your insurer, policy number and their 24-hour emergency contact number when you book with us or as soon as possible thereafter. Wendy Wu Tours cannot in any way be made liable for any additional cost incurred by the customer on any tour due to the customer not having adequate travel insurance. We also encourage all customers to take a copy of their travel insurance documents (especially relevant international contact numbers) with them while on tour. We advise that you check the inclusions and procedures for lodging claims prior to your departure. These documents should be stored separately from the original.

### EATING IN ASIA:

---

On this tour you will get to experience a variety of dining options. Pre and post cruise in India and Hong Kong you will dine as a group, whereas during the cruise, you will dine independently. You will have the option to dine in the main on-board restaurants included as standard in your cruise package. Alternatively, you can opt to dine in the on-board specialty venues or restaurants on land, both of which will be payable locally.

**Southeast Asia:** Southeast Asia is home to an incredibly rich food history. The local cuisine is known for its intense flavours, spices and some of the freshest ingredients you can find. In general, meals include either rice or noodles and are packed full of flavour. Lemongrass, ginger, lime leaves, coriander, fish sauce and soy sauce are used in many local dishes. Whilst Southeast Asian food has a reputation for being hot and spicy, each region actually has its own distinct characteristics. Vietnam, for example, is perhaps best known for its fresh and aromatic dishes – relying heavily on flavours from fresh herbs such as mint, basil and dill.

When dining in Southeast Asia, although some restaurants have adopted a western approach to dining, expect some restaurants to follow the traditional communal style of eating. Typically, this will mean each diner has their own small bowl and may serve themselves from a variety of shared dishes. At some local restaurants, appetizers and main courses might be served when they are ready instead of following a particular order.

Determining when it is appropriate to use chopsticks, forks or spoons can be challenging for some travellers, even other Asians, as each country has different customs. Usually, chopsticks or other utensils are provided to scoop the food into your bowl to prevent your own chopsticks from touching the food that remains on the table. Dining in Southeast Asia is fairly casual with not too many rules. Leaving food on the plate is not considered rude.

**India:** Indian cuisine is one of the most influential, diverse, and flavoursome culinary styles in the world. Indian dishes incorporate many spices and seasoning to create an explosion of flavours. Though Indian cuisine can vary greatly from the Indian food we get in Australia, it is important to keep an open mind and be adventurous. Please be aware that dishes selected for your meals reflect the cooking styles and signature dishes of the local area you are in.

Dishes served in restaurants on our group tours are varied. Some will be vegetable-based with meat mixed in, and a few will be meat-based. Our restaurants are aware of the western palate – there are plenty of non-spiced options.

When eating lunches and dinners, you will usually be seated around a large table with other tour members. Dishes will be served in the traditional ‘family style’; meaning that various dishes will be laid out in the centre of the table. These dishes are intended to be shared amongst the group – there is always more than enough to feed everyone. All beverages will be at your own expense and are readily available

On some days where lots of sights are covered, dinner times may be early and your tour group may head directly to the restaurant after sightseeing without stopping at your hotel to freshen up.

PLEASE INFORM US OF ANY ALLERGIES AND/OR SPECIAL DIETARY REQUIREMENTS AT TIME OF BOOKING.

### ACCOMMODATION PRE AND POST CRUISE:

---

Your accommodation has been selected for convenience of location, comfort, or character, and can range from a business hotel in one city to a family-run guesthouse in a smaller town or a heritage-type hotel. In remote areas, accommodation may be of a lower standard and may not have western amenities. Hotels are generally rated as local three to four-star standard but do please note that there is no international classification system for hotels and differences in facilities and quality do exist between Australia and Asia. Rest assured that all hotels used by Wendy Wu Tours are regularly inspected by our staff and our partners to ensure that standards are met.

Please be aware that there are heightened security measures being carried out at all hotels, on guests and vehicles entering the properties.

All hotels have private western bathroom facilities, TV, and a telephone. Plumbing and electricity supplies can be erratic and quite often the power in hotel rooms is turned off while guests are out of the room. If you experience any difficulty, please speak to your Local Guide or National Escort.

### **PORTERAGE:**

---

Please be aware that portorage is not included on this tour. You will therefore need to be able to handle your own luggage within the hotel and when using transportation like trains and coaches.

Portorage is however, included onboard the Celebrity Solstice Cruise Ship. Please note, you will be able to leave your luggage outside your cabin door on the last night of your cruise, staff will then be able to make arrangements for your luggage, ready for disembarkation early next morning. Please also note, it is customary to tip for the portorage service.

### **TIPPING POLICY PRE & POST CRUISE:**

---

Tipping while on holiday is common in most parts of the world and Asia is no exception. However, it is not always clear who it is appropriate to tip and how much. Furthermore, travellers may not have the right amounts of cash available at the right time. In order to avoid any inconvenience, Wendy Wu Tours operates a tipping policy where a stated amount is given to your National Escort at the beginning of your tour and tips are disbursed to local guides and drivers throughout your tour. The amount is designed to be at a reasonable level for travellers while being fair to the local people and includes a gratuity for the National Escort.

If you are travelling in a smaller group with local guides only, then tipping is paid in each destination. To be fair to the guides we ask for slightly higher amounts per traveller with small groups.

We generally find that most customers appreciate the convenience of our tipping policy, but we do recognize that it may not suit everyone. However, as this is a group tour, we ask that everyone follows the same protocol to be fair to other group members and to ensure smooth operation of your tour.

### **TRANSFERS:**

---

As we offer our customers a variety of airlines to suit your needs, passengers will arrive/depart in India/Hong Kong at various times during the day. Depending on the number of customers arriving/ departing on the same flight as yourself, the type of transfer to your hotel/ airport will vary.

You will always be met on arrival by English-speaking staff and transferred to your hotel either by:

- Direct shared bus (shared with other passengers, not just Wendy Wu Tours clients)
- Shared bus plus taxi from the nearest bus stop to the hotel (maximum 5-minute walk)
- Chartered coach (if there are more than 8 Wendy Wu Tours passengers arriving at the same time)

On the departure day, all passengers will be met by English-speaking staff at the hotel and transfer by one of the three ways above. For those passengers using a shared bus or shared bus plus taxi to the airport, the guide services end when they drop you off at the bus stop, and you will need to check in at the airport on your own. If you have paid extra for a private transfer, the above does not apply.

You will meet your National Escort at the welcome dinner or, if arriving late, the following morning after breakfast at the welcome meeting. Please ensure your Wendy Wu Tours luggage tag is visible on your suitcase/hand luggage, as this may also assist your guide in identifying you. If at any stage you are unable to locate your representative, please contact our India / Hong Kong ground operator on the number included in your final documents.

### **CRUISE:**

---

Celebrity Solstice boasts many world class amenities as well as a wide choice of complimentary and speciality dining, including menus by a Michelin-starred chef. Offering award-winning onboard experiences from an array of live music and shows to varied culinary delights, the plethora of lounges and decks also provide incredible views and idyllic spots to unwind during your days at sea.

**Boarding Procedures:** Online and app Check-in is available 45 days before your cruise and remains available up to 3 days before you cruise. Once you have completed the Check-In process online or in the app, you will receive an Xpress Boarding Pass. This indicates that you successfully completed the check-in process for yourself, and those guests listed on your Xpress Pass.

During check-in, you're required to select an arrival time. One of the benefits of app check-in is that your arrival time is listed on your mobile Xpress Pass. Please arrive during your selected window to avoid delays at the terminal.

Due to government regulations requiring cruise lines to submit final departure manifests at least 60 minutes prior to sailing, guests are requested to complete Check-in no later than 3 days prior to their cruise. If you do not complete Check-in 3 days prior, you will be required to complete this process at the pier at least two hours prior to the published sailing time.

*Please note: All guests must be checked-in and onboard the ship no later than 90 minutes prior to the published sailing time or you will not be permitted to sail.*

**Cruise Schedule:** While we do our best to adhere to our published itineraries, they may be changed at the discretion of the captain due to weather advisories, port traffic, and any other unforeseeable circumstances.

**Dress Code:** Smart Casual attire is required for entry to main dining, specialty dining, and the Celebrity Theatre. Smart Casual means you look comfortable yet tasteful in a dress, skirt, long

pants, or jean, and stylish top or button-down. Shorts and flip flops are not considered Smart Casual. Your 7-night cruise will feature two "formal" nights we call Evening Chic. Evening Chic means you dress to impress, glamorous and sophisticated in your own way, with a cocktail dress, skirt, slacks, or designer jean, an elegant dress top or blazer - some guests even pack a tuxedo or gown for onboard photos. The Daily program, delivered to your stateroom and available at the Guest Relations Desk, will be your guide to the correct attire each evening. If you do not wish to participate in Evening Chic, Smart Casual attire is acceptable for dining and theatre.

**Drinks Inclusions:** Soft and alcoholic drinks are included on-board Celebrity Solstice.

**Tipping:** Gratuities are included onboard your cruise. Any additional services you purchase, such as spa treatments and speciality dining, will incur gratuities charges that will be payable by yourself directly to the cruise line.

### SHORE EXCURSIONS AND CRUISE INCLUSIONS:

---

When docked at each port you will have the opportunity to experience shore excursions. Celebrity Cruises offer a wide array of authentic shore excursions, making it a great way to explore more of each destination. Please note, not all shore excursions will include a guide and shore excursions may be cancelled due to inclement weather conditions or for any other reason at the discretion of Celebrity Cruises. Any shore excursions will be at your own expense and bookable on your cruise reservation.

### CRUISE ACCOMODATION AND CABINS:

---

At the time of booking, subject to availability you may have the choice to book from an outside cabin or balcony cabin. Should you wish to upgrade to a suite or have a special request for cabin location, please speak to our reservations department who will be able to assist.

### TRANSPORT:

---

Coaches with air conditioning are used on our tours for city sightseeing, short excursions to the countryside and longer transfers where necessary. Main and inner-city roads in India have a reputation for being very congested. For this reason, it may not always be possible to return to your hotel after sightseeing to freshen up before going to the restaurant for dinner. Roads in India have generally been improved over recent years, but traffic and/or weather conditions may extend driving times. Road construction work usually covers an enormous section of road - not just one or two kilometres as you may be used to. For this reason, the timings listed in the sections above are approximations only.

**Safari's:** Specialized vehicles designed for use in wildlife safaris and are adapted to provide a safe and comfortable experience for tourists and wildlife enthusiasts while allowing for close-up views of animals in their natural habitats.

**Open-Air Safari Jeeps:** These are typically open-roofed, four-wheel-drive vehicles with raised seats in the back for better visibility. Open-air jeeps provide an unobstructed view of wildlife. Please always keep your arms/hands inside the vehicles.

### DEVELOPMENT IN ASIA:

---

Although India, Thailand and Vietnam, are developing quickly, they still lack the international standards of civil infrastructure and tourist facilities. Concepts of personal responsibility are also different to those in the Australia. Consequently, tourist and public facilities may not uphold the same safety standards as in the Australia; for example, you may see a hole in the road without a warning sign or safety barricade. All our suppliers meet local safety standards at a minimum. We want you to have an enjoyable holiday, so we ask that you take extra care, use your common sense, refer to notices and follow advice from your guide.

Singapore and Hong Kong are developed country and as such matches the West in modernity and technological advances.

All countries are extremely safe to visit and takes great pride and responsibility in maintaining high safety standards.

### GROUP SIZE:

---

Most of our groups pre & post cruise consist of 10 travellers or more and will be accompanied by a national escort. There will usually be no more than 28 travellers in each group although you may encounter other Wendy Wu tour groups while you are travelling.

All our departures are guaranteed to operate with a minimum of 10 travellers booked (unless cancelled due to factors beyond our control). A national escort will accompany each group of 10 or more. However, at our discretion we may operate departures with a smaller group size as we try to operate advertised departures wherever it is viable to do so.

### APPROPRIATE DRESS

---

When visiting temples or mosques, both men and women should dress in conservative, non-revealing clothing. Full-length trousers with a shirt or t-shirt for men; and trousers or skirts well below the knee with a top that covers the shoulders and upper arms for women. Women might also consider carrying a 'modesty shawl' in their daypack – this could be a sarong or light scarf – which they can wear over their shoulders and heads to feel more comfortable while sightseeing at mosques. When visiting Jain temples, you must not wear or take in any leather items such as belts, watches, camera straps, purses and shoes.

Religious sites and homes throughout India – for Hindus, Jains, Sikhs, Muslims, or Buddhists to name a few – require all visitors to remove their shoes to enter. Even if you then need to walk outdoors, over hot or rough ground, you will not be allowed to wear shoes. You will often find shoe storage rooms near the entrance of a site where it is customary to leave your shoes near the entrance. Occasionally there are ‘shoe minders’ who will offer to keep your shoes safe for a ‘tip’ – this is not compulsory so each customer can choose to tip for this service or not. If you do not want to remove your shoes, you will have to remain outside.

We recommend shoes that easily slip on and off, and carry a pair of thick, old socks in your day pack, which you can wear to protect your feet from any rough or hot surfaces.

### **SOUVENIRS:**

---

We want to be able to give you an opportunity to buy souvenirs, so we include some stops at museums or exhibitions which demonstrate a craft or product unique to that region with pieces available to buy. We understand that souvenir hunting is not for everyone, so we aim to take you to places, which hold local interest. We trust you will enjoy these opportunities to learn about local arts and crafts and understand their historical and cultural importance.

### **LUGGAGE:**

---

All travellers are limited to two items of luggage each: a suitcase with a maximum weight of 20kg and one piece of hand luggage with a maximum weight of 5kg. It is essential that your luggage is lockable.

### **PERSONAL EXPENSES:**

---

You will need to take some extra money to cover drinks, laundry, and souvenirs, plus any additional sightseeing that may be offered to you.

It is highly recommended that extra care and attention is paid when exchanging money when travelling outside large cities. We suggest exchanging your money before travelling to smaller towns, as exchange facilities can be very limited. Your National Escort will remind you to do this before departure.

### **CLIMBING STEPS:**

---

Sightseeing at nearly all the palaces, fortresses and some temples involves climbing quite a number of steps. These palaces were built to provide defence against potential invaders so nearly all of them stand on top of a hill, while the interiors have layers of narrow hallways and steps to slow down the advance of enemies once they were inside. The steps tend to be quite large, not level and sometimes without handrails.

Buddhist temples or pagodas also tend to be built at an elevation, as this is the most auspicious position according to ancient beliefs. This means you sometimes need to walk from the bus park to the entrance, and/or need to climb some steps inside.

People with knee or hip injuries who have poor balance or are otherwise unable to complete these activities independently should consider the suitability of this itinerary carefully.

### **VACCINATIONS AND YOUR HEALTH:**

---

We recommend that you contact either your GP or Travelvax (1300 360 164) for advice on vaccinations and travel health. Travelvax has a comprehensive website that you may also find useful [www.travelvax.com.au](http://www.travelvax.com.au).

### **AFTER YOUR BOOKING:**

---

Once you have booked with Wendy Wu Tours, you will receive a confirmation invoice along with a link to our website where you can find your visa information and more useful predeparture travel information. Your final documentation pack will be sent to you approximately 2-3 weeks prior to departure.

Updated: March 2025